

# GOBLIN 500 SPORT

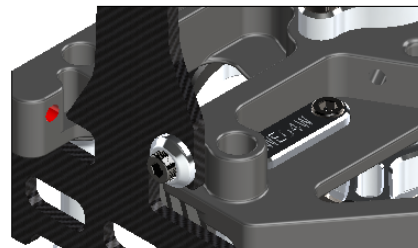
## TIPS FOR PROPER ASSEMBLY



A24-Rev01

### SERIAL NUMBER

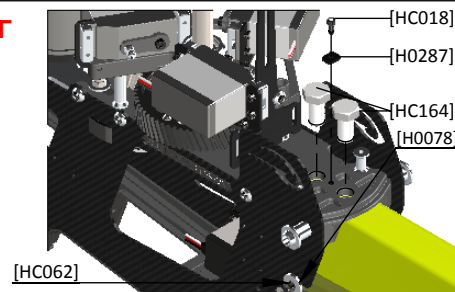
Please take a moment to register your kit online via our web site at: <http://www.goblin-helicopter.com>  
It is extremely important that you take a moment to register your helicopter with us.  
This is the only way to ensure that you are properly informed about changes to your kit, such as upgrades, retrofits and other important developments.  
SAB Heli Division cannot be held responsible for issues arising with your model and will not provide support unless you register your serial number.



### TO ASSEMBLE THE TAIL BOOM PROPERLY YOU MUST

- First of all, tighten the nylon bolts.  
The tool included in the kit ( Part #HA016) is designed to provide the proper amount of torque with your barw hands. Please tighten the bolts firmly with this tool!  
After you have tightened the nylon bolts you can tighten the M3x12 bolts the support the lower part of the boom. Please use plenty of loctice on these bolts!

- **It is very important** to follow this sequence, nylon bolts first, then M3x12 bolts.  
Remember to check the tightness of the M3x12 bolts frequently.



### CARBON FIBER PARTS

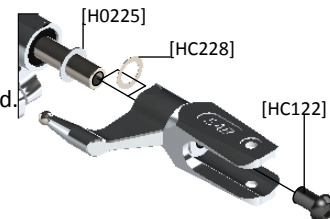
- The edges of the carbon frames are very sharp.  
Use sandpaper to soften the edges, specially in areas where wires are routed as well as in areas where the battery Velcro straps come in contact with the carbon.



### BLADE GRIP AXIAL PRELOAD

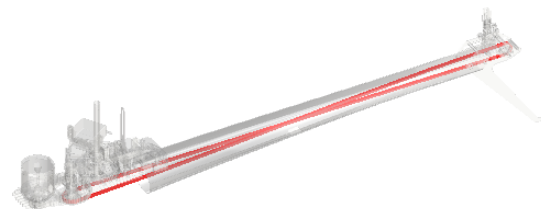
- The HPS head should be assembled with one 1mm spacer H0225 on each side.  
After approximately 10/20 flights, please check preload, you can add one or two shim HC228 if preload has changed.

For hard 3D, the best setup is add one extra shim between the spacer H0225 and bearing.  
Important is that the blade grips must move freely, but they should not move just under their own weight.



### TAIL BELT TENSION

- The belt must be tight!  
If the model is making strange noises, this can be usually attributed to incorrect belt tensions.  
Check the belts again and tighten if necessary.



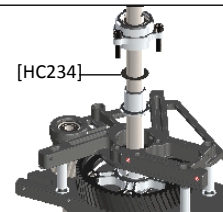
### CANOPY RELEASE

- The grommet hole on the canopy is about 6mm.  
The canopy grommet works best with a 10mm hole.  
You can enlarge the hole slightly to optimize the vertical position of the canopy itself.  
You can check page 25 of the manual for more information.



### MAIN SHAFT PLAY

- Very carefully check to make sure you can turn the main shaft freely. If you feel too much friction, you have used too many shims, you can remove a shim until the shaft turns freely.



### PROPER LUBRICANTION IS REQUIRED

- Use synthetic grease in the damper area, Orings, Spindle. ( Such as Microlube GL261 ).  
Apply a little bit of grease to the one way bearing inside the main pulley.  
It is always recommended to regularly use a lubricant spray, such as WD40 to prevent corrosion of steel parts, such as main and tail shaft, etc.



The items outlined in this document should be checked regularly and particularly after a crash

SAB HELI DIVISION